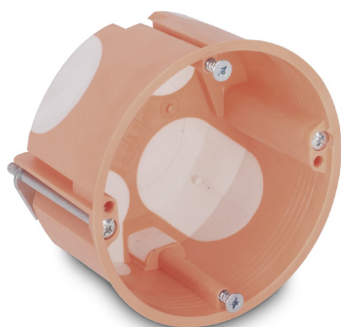




EBHD 68 WD



outlet box, single gang, draughtproof

Properties	mounting screw spacing 60 mm, drilled hole size required Ø 68 mm, box rim diameter Ø 71 mm, for partition board thickness from 7 to 35 mm, maximum 4 conduit entries Ø 20 mm, 2 conduit entries Ø 25 mm and 4 cable entries
Colour	orange, similar to RAL 2004
Usage	for dry lining installations

Standard: ÖVE/ÖNORM EN 60670-22:2007



Halogen free
False

Degree of protection (IP)
IP30

Art. no.	Part No.	Dimensions	VPE (pc) small/medium/large
101 020	EBHD 68 WD 100 pc. box individually labelled	Ø 65 x 45 mm	- / 100 / 3500
102 236	EBHD 68 WD 20 pc. bag	Ø 65 x 45 mm	1 / 12 / 216
102 237	EBHD 68 WD Plus 100 pc. box individually labelled	Ø 65 x 60 mm	- / 100 / 3500

Areas of Recommended Application

break-out opening	False
seal membrane	True
nozzle	False
step membrane	False
Mounting switching equipment	Screwing
Luminaire hook mounting	False
Nozzle	None
With nail lugs	False
Circuit integrity	None

Further technical details

Model	Single
Shape	Round
Mounting method	Hollow wall
With screws	True
Provided with revolving ring	
Connectable	
Equipped with	None
Cover attachment	Screwed
Material	PP-Blend