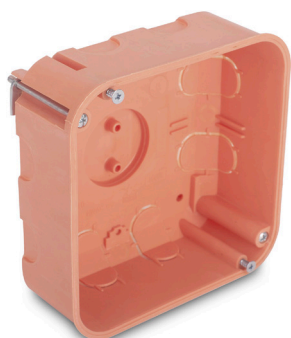




EBHK 100



distribution box, chlorine-free

Properties	required milled holes 4x Ø 35 mm, 8 conduit entries Ø 20 mm, with guide groove for partition walls
Colour	orange, similar to RAL 2004
Usage	for dry lining installations



Halogen free
False

Degree of protection (IP)
IP30

Art. no.

102 235

Part No.

EBHK 100 R 40 pc. box individually
labelled

Dimensions

107 x 107 x 52 mm

VPE (pc) small/medium/large

- / 40 / 960

Areas of Recommended Application

break-out opening	True
seal membrane	False
nozzle	False
step membrane	False
Mounting switching equipment	
Luminaire hook mounting	False
Nozzle	None
With nail lugs	False
Circuit integrity	None

Further technical details

Model	Single
Shape	Square
Mounting method	Hollow wall
With screws	True
Provided with revolving ring	
Connectable	
Equipped with	None
Cover attachment	Screwed
Material	PP-Blend